

BASILICA HUDSON



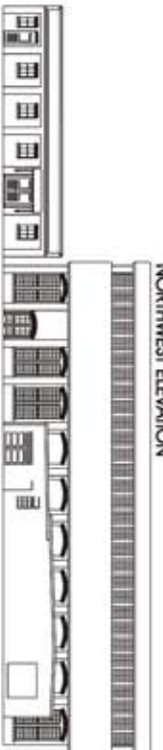
The Basilica Hudson is a reclaimed 19th century industrial art and performance space. Located just steps from the Hudson Amtrak Station on the waterfront of the Historical town of Hudson, NY.

We are honored to pursue the mission of the Basilica's founder and former owner, Patrick Doyle, who over the last decade transformed the building into a gathering space for the local community. Blessed by Patti Smith herself who in 2003 gave a benefit concert for The Friends of Hudson Foundation – in protest against the development of a massive cement plant that would have occupied the city of Hudson's beautiful waterfront. The fight against the plant was successful and changed the fate of this unique river town forever. 2011 marks a new season at the Basilica Hudson offering a home to the artistic and cultural community at large, hosting diverse events ranging from community fundraisers to art exhibitions, to food and film festivals, as well as remaining an extraordinary venue for independent music and theater. Basilica Hudson will also serve as a production facility for Photography, Film, Art and Music.

Basilica Hudson's striking Industrial architecture makes it a unique location for weddings and other celebrations, framed by the iconic Hudson River School skies and view of the Catskill Mountains. The variety of spaces, light and textures makes Basilica Hudson ideal as a location for Film and Photo Shoots.

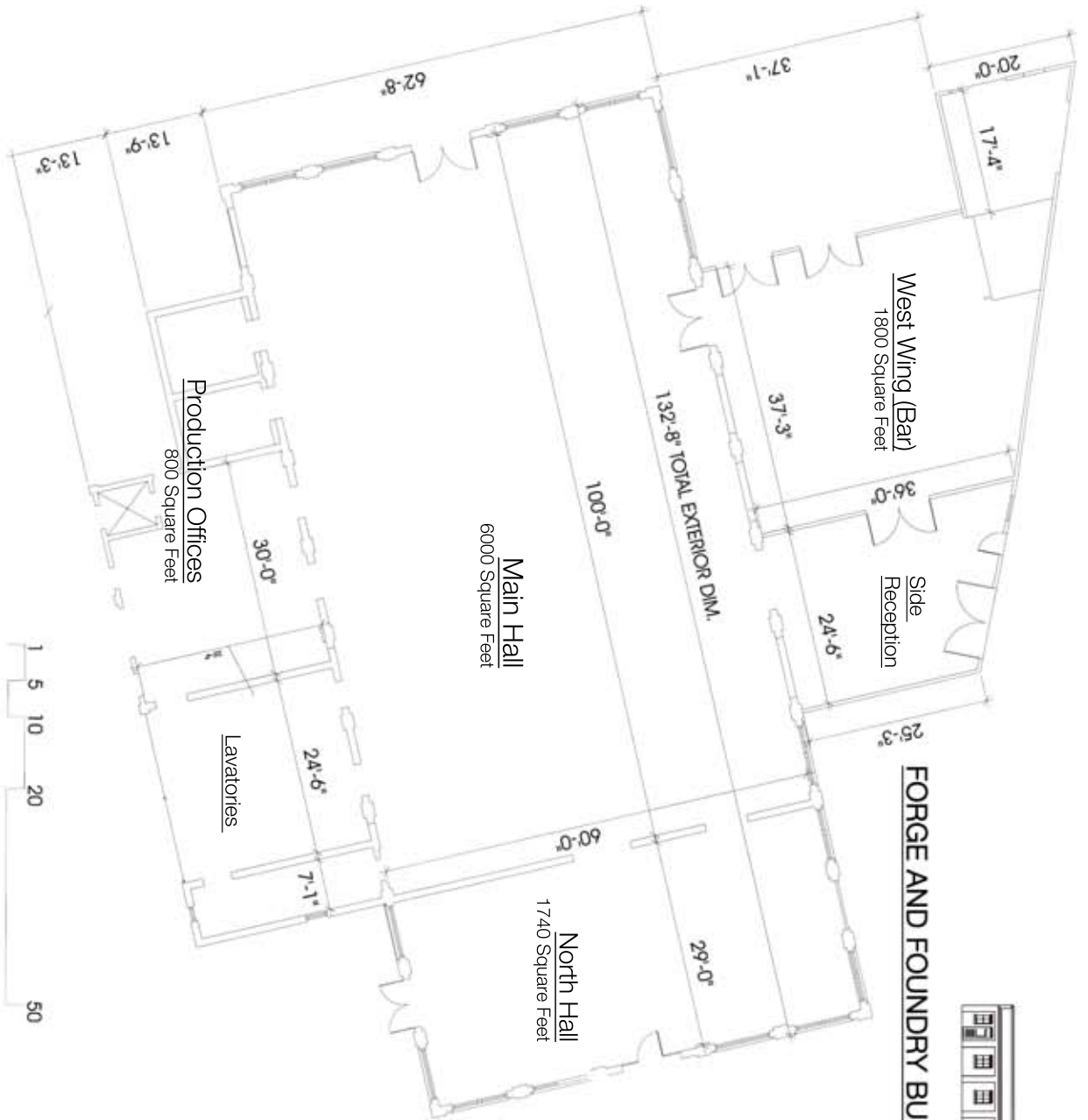
The city of Hudson is filled with fine restaurants, B&Bs, art galleries, music venues and shops. With an exceptionally beautiful landscape, the Hudson Valley is a cultural meeting place for artists, architects, farming and food enthusiasts, preservationists and antique collectors.





NORTHWEST ELEVATION

FORGE AND FOUNDRY BUILDING



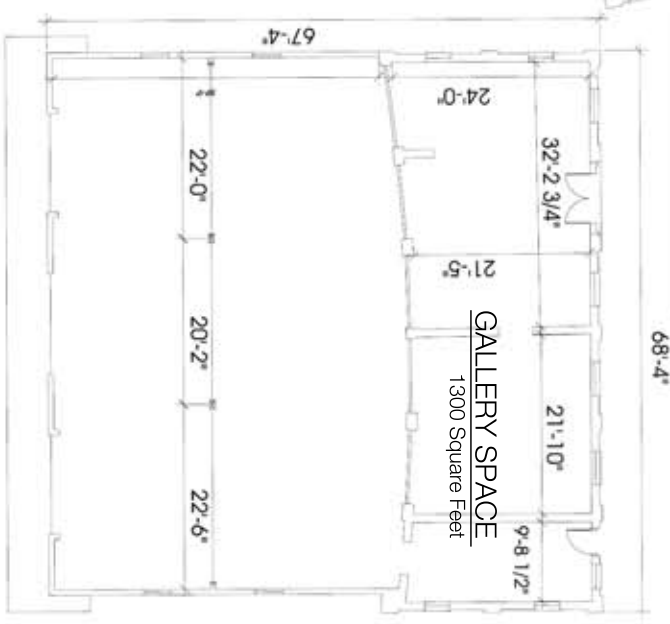
Specifications:

- Land: 2.5 acres
- Forge and Foundry Structure : 13,700 Square feet
- Gallery: 4,300 Square feet
- Electricity: 1200 amps 3 phase
- Water: City of Hudson
- Sewer: City of Hudson
- Gas: Connection from National Grid

Construction:

- 1 1/2 inch square brick columns on 12 foot centers.
- Steel roof trusses with bolt and rivets.
- Fired terra cotta tiles in steel channels.
- Roof: Metal
- Ceiling height at outside wall : 20 feet
- Ceiling height at center : 40 feet

GALLERY BUILDING



BASILICA HUDSON

110 South Front Street Hudson, New York

FLOOR PLAN

